

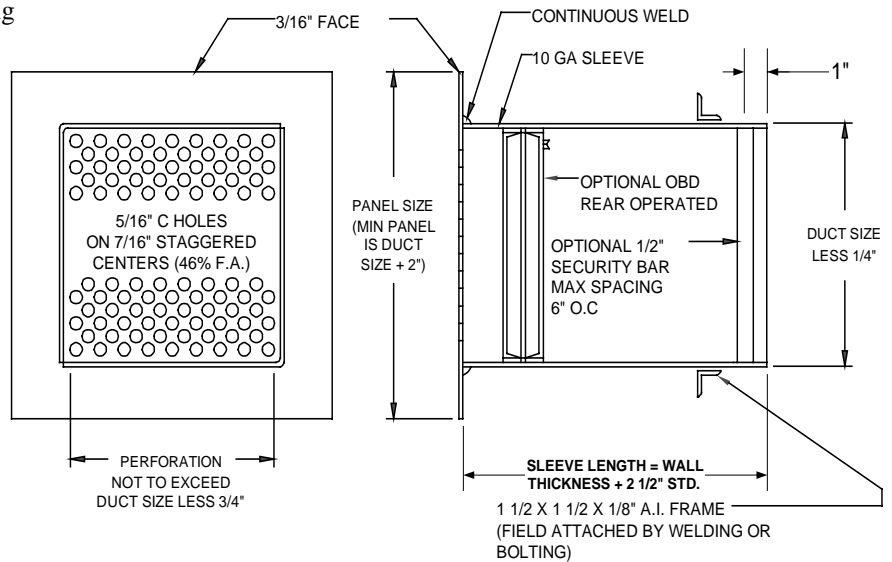


Specifications

- Frame:** 10ga. x wall thickness + 2 1/2" steel sleeve
- Grille:** 3/16" steel plate continuously welded to perimeter mounting angles at face.
- Finish:** One coat MFM prime.
- Minimum size:** 6" w x 6" h.
- Maximum size:** 48" w x 48" h.

Options

- Flange size.
- Rear flange.
- Sleeve depths.
- Grilles - Many variations of grilles are available, consult factory.
- Damper.
- 1/2" Diameter steel concrete anchors.
- Finishes.



Notes

- Width x height are nominal opening dimensions. Unless specified otherwise, units will be constructed 1/4" less.
- Metal Form reserves the right to improve design or change specifications at any time.

Tag	Qty.	Width	Height	Length	Options	Finishes/Specify	Remarks

Project: _____

Architect: _____

Engineer: _____

Contractor: _____