



METAL FORM MANUFACTURING CO., INC  
 5960 WEST WASHINGTON STREET  
 PHOENIX, ARIZONA 85043  
 TELEPHONE: 602-233-1211 FAX: 602-233-2033  
 WEBSITE ADDRESS: WWW.MFMCA.COM

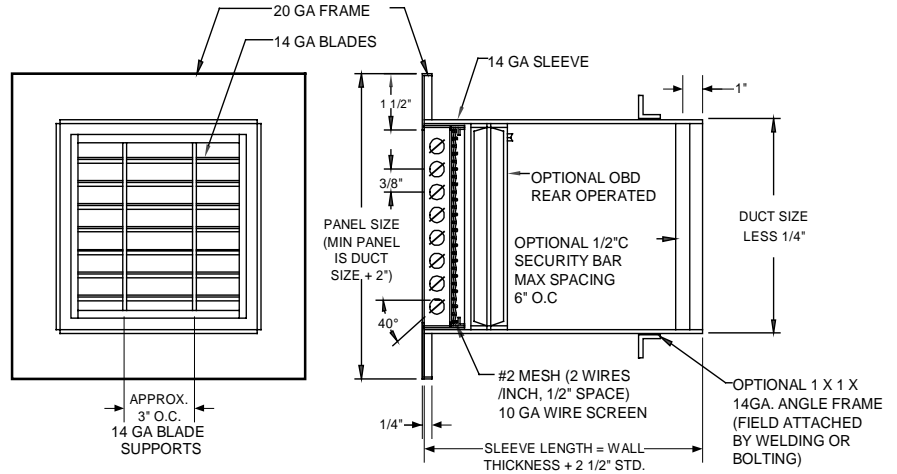
# Model MFX-89 Security Grille Primed Steel

## Specifications

- Frame:** 14ga. x wall thickness + 2 1/2" steel sleeve
- Grille:** 20ga. steel welded at face.
- Finish:** One coat MFM prime.
- Minimum size:** 6" w x 6" h.
- Maximum size:** 48" w x 48" h.

## Options

- Flange size.
- Rear flange.
- Sleeve depths.
- Grilles - Many variations of grilles are available, consult factory.
- Damper.
- 1/2" Diameter steel concrete anchors.
- Finishes.



## Notes

1. Width x height are nominal opening dimensions. Unless specified otherwise, units will be constructed 1/4" less.
2. Metal Form reserves the right to improve design or change specifications at any time.

Tag	Qty.	Width	Height	Length	Options	Finishes/Specify	Remarks

**Project:** \_\_\_\_\_  
**Architect:** \_\_\_\_\_  
**Engineer:** \_\_\_\_\_  
**Contractor:** \_\_\_\_\_