

Model MFL-30 Fabricated Stationary Louver 6" Deep Plain Blade

Specifications

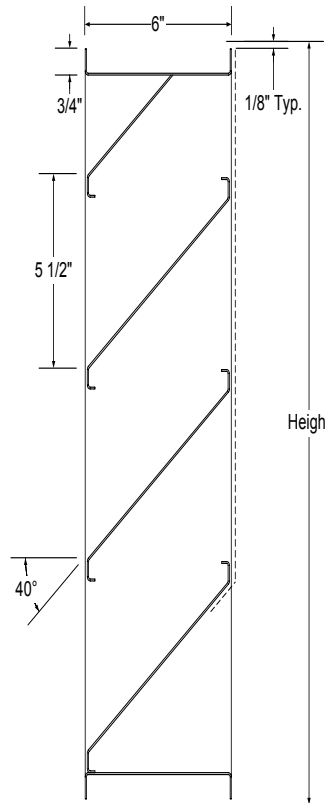
- Frame:** 18ga. galvanized steel channel frame.
Blades: 18ga. galvanized steel.
Screen: 1/2" x 1/2" x 19ga. galvanized steel.
Finish: Standard mill.
Minimum size: 12"w x 12"h.
Maximum size: 72"w x 120"h.
size: Multiple section - unlimited size.

Options

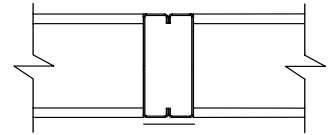
- Flanged frame.
- Architectural mullions.
- Sill extension.
- Sleeves.
- Sub frame (requires flanged louver).
- Screens - Many variations of screens are available , consult factory.
- Finishes - Many types of finishes are available, consult factory.
- Other options are available, consult factory.

Notes

1. Width x height are nominal opening dimensions. Unless specified otherwise, units will be constructed 1/4" undersize.
2. Metal Form reserves the right to improve design or change specifications at any time.



Section View



Mullion Detail



Optional Flanged Frame

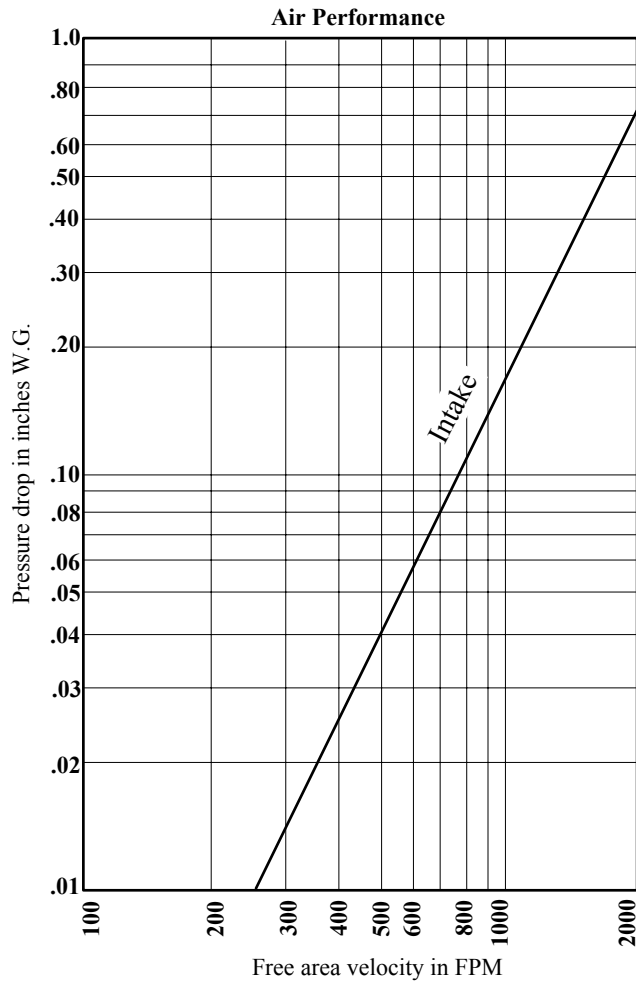
Tag	Qty.	Width	Height	No. of Panels (W x H)	Options	Finishes/Specify	Remarks

Project: _____
Architect: _____
Engineer: _____
Contractor: _____

Metal Form Manufacturing Co., Inc.
 Form No. L-3011 © November 2011
 Supersedes Form No. L-3098

Refer to back page for performance data.

Model MFL-30 Performance Data



Test unit size 48" x 48"
Graph is corrected to standard air density .075 lbs. per cubic feet.
Ratings do not include the effects of a bird screen.

Free Area Chart - Sq. Ft.

Height	120	5.02	7.89	10.75	13.62	16.49	19.36	22.23	25.09	27.96	30.83	33.70
	108	4.46	7.01	9.55	12.10	14.65	17.20	19.74	22.29	24.84	27.39	29.93
	96	3.84	6.09	8.34	10.59	12.84	15.09	17.34	19.59	21.84	24.09	26.34
	84	3.36	5.33	7.30	9.27	11.24	13.21	15.18	17.14	19.11	21.08	23.05
	72	2.88	4.57	6.26	7.95	9.63	11.32	13.01	14.70	16.38	18.07	19.76
	66	2.61	4.13	5.66	7.19	8.71	10.24	11.76	13.29	14.82	16.34	17.87
	60	2.33	3.70	5.06	6.42	7.79	9.15	10.52	11.88	13.25	14.61	15.98
	54	2.06	3.26	4.46	5.66	6.87	8.07	9.27	10.48	11.68	12.88	14.09
	48	1.78	2.82	3.86	4.90	5.95	6.99	8.03	9.07	10.11	11.15	12.20
	42	1.50	2.38	3.26	4.14	5.02	5.90	6.78	7.67	8.55	9.43	10.31
	36	1.23	1.95	2.67	3.38	4.10	4.82	5.54	6.26	6.98	7.70	8.42
	30	0.96	1.52	2.09	2.65	3.21	3.77	4.34	4.90	5.46	6.02	6.59
	24	0.72	1.14	1.56	1.99	2.41	2.83	3.25	3.67	4.10	4.52	4.94
18	0.48	0.76	1.04	1.32	1.61	1.89	2.17	2.45	2.73	3.01	3.29	
12	0.24	0.38	0.52	0.66	0.80	0.94	1.08	1.22	1.37	1.51	1.65	
	12	18	24	30	36	42	48	54	60	66	72	
	Width											