



METAL FORM MANUFACTURING CO., INC  
 5960 WEST WASHINGTON STREET  
 PHOENIX, ARIZONA 85043  
 TELEPHONE: 602-233-1211 FAX: 602-233-2033  
 WEBSITE ADDRESS: WWW.MFMCA.COM

# Model MFB-52

## Roof Curb

### Cant Style

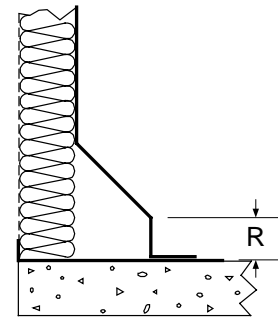
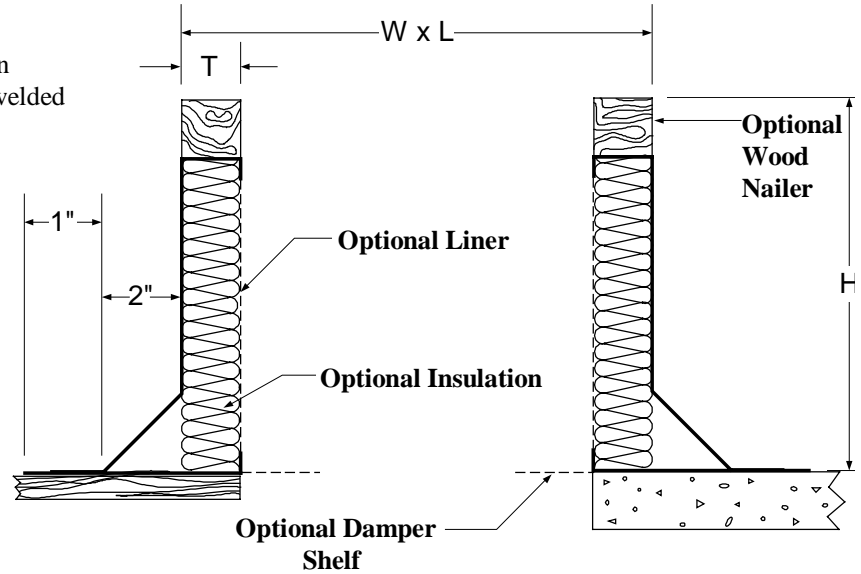
Galvanized Steel

### Specifications

- Shell:** 18ga. galvanized steel with built in 45 degree cant and continuously welded seams.
- Finish:** Standard mill.
- Minimum size:** 12"w x 12"l x 6"h.
- Maximum size:** Unlimited size.

### Options

- Wood nailer.
- Internally insulated.
- Raised cant. (Specify "R" dimension.)
- Liner.
- One way pitch.
- Two way pitch.
- 3 1/2" or 5 1/2" "T" dimension.
- Damper shelf.
- Burglar bars.



**RAISED CANT**

### Notes

1. Width x length are curb O.D. dimensions.
2. "T" dimension available in 1 1/2", 3 1/2", 5 1/2" widths. Unless specified otherwise, standard "T" dimension is 1 1/2".
3. Metal Form reserves the right to improve design or change specifications at any time.

Tag	Qty.	Width	Length	Height	T	R	Options	Remarks

**Project:** \_\_\_\_\_  
**Architect:** \_\_\_\_\_  
**Engineer:** \_\_\_\_\_  
**Contractor:** \_\_\_\_\_